

Our Ship:

DDG-16 USS JOSEPH STRAUSS



CLASS - CHARLES F. ADAMS As Built.

Displacement 4526 Tons (Full), Dimensions, 437' (oa) x 47' x 15' (Max)

Armament 2 x 5"/54 RF (2x1), Tartar SAM (1x1 Mk 13) ASROC ASW (1x8), 6 x 12.75" Mk 32 ASW TT (2x3).

Machinery, 70,000 SHP; Geared Turbines, 2 screws

Speed, 33 Knots, Range 4500 NM@ 20 Knots, Crew 333-350.

Operational and Building Data

Laid down by New York Shipbuilding on December 27 1960.

Launched December 9 1961 and commissioned April 20 1963.

Strauss served as plane guard for carriers on [Yankee Station](#) in the [Tonkin Gulf](#), participated in [Sea Dragon](#) and [Market Time](#) operations, patrolled on search and rescue duties and carried out gunfire support missions during the conflict in [Vietnam](#).

DDG-26 / D-39 HMAS HOBART

CLASS - CHARLES F. ADAMS As Built.

Displacement 4526 Tons (Full), Dimensions, 437' (oa) x 47' x 15' (Max)
Armament 2 x 5"/54 RF (2x1), Tartar SAM (1x1 Mk 13) ASROC ASW (1x8), 6 x 12.75" Mk 32 ASW
TT (2x3).

Machinery, 70,000 SHP; Geared Turbines, 2 screws
Speed, 33 Knots, Range 4500 NM@ 20 Knots, Crew 333-350.

Operational and Building Data

Laid down by Defoe Shipbuilding, Bay City Mich on October 26 1962.

Launched January 9 1964.

Commissioned December 18 1965.

Built for the Australian Navy.

HMAS Hobart (D39)

HMAS Hobart (D-39) was a modified [Charles F. Adams-class](#) (RAN type is *Perth*-class) guided missile armed [destroyer](#) of the [Royal Australian Navy](#). She was laid down by Defoe Shipbuilding Company at [Bay City, Michigan, USA](#), on [26 October 1962](#), launched on [9 January 1964](#) and commissioned at [Boston](#) in [Massachusetts](#) on [18 December 1965](#).

Hobart served as plane guard for carriers on [Yankee Station](#) in the [Tonkin Gulf](#), participated in [Sea Dragon](#) and [Market Time](#) operations, patrolled on search and rescue duties and carried out gunfire support missions during the conflict in [Vietnam](#).

On [June 17 1968](#) while on duty in Vietnamese waters, *Hobart* was struck by three Sparrow missiles fired from a [USAF](#) 7th Air Force aircraft (one of the three missiles failed to explode). Two crew were killed and several injured. Shrapnel holes were still evident in *Hobart's* AN/SPG-51C Missile Fire Control radar power supplies as late as the early-mid [1980s](#).



DDGs Hobart, Brisbane and Perth

DDG-27 / D-41 HMAS BRISBANE

CLASS - CHARLES F. ADAMS As Built.

Displacement 4526 Tons (Full), Dimensions, 437' (oa) x 47' x 15' (Max)
Armament 2 x 5"/54 RF (2x1), Tartar SAM (1x1 Mk 13) ASROC ASW (1x8), 6 x 12.75" Mk 32 ASW
TT (2x3).

Machinery, 70,000 SHP; Geared Turbines, 2 screws
Speed, 33 Knots, Range 4500 NM@ 20 Knots, Crew 333-350.

Operational and Building Data

Laid down by Defoe Shipbuilding, Bay City Mich on February 15 1965.

Launched May 5 1966.

Commissioned December 16 1967.

Built for the Australian Navy.

DDG-25 / D-38 HMAS PERTH

CLASS - CHARLES F. ADAMS As Built.

Displacement 4526 Tons (Full), Dimensions, 437' (oa) x 47' x 15' (Max)
Armament 2 x 5"/54 RF (2x1), Tartar SAM (1x1 Mk 13) ASROC ASW (1x8), 6 x 12.75" Mk 32 ASW TT
(2x3).

Machinery, 70,000 SHP; Geared Turbines, 2 screws
Speed, 33 Knots, Range 4500 NM@ 20 Knots, Crew 333-350.

Operational and Building Data

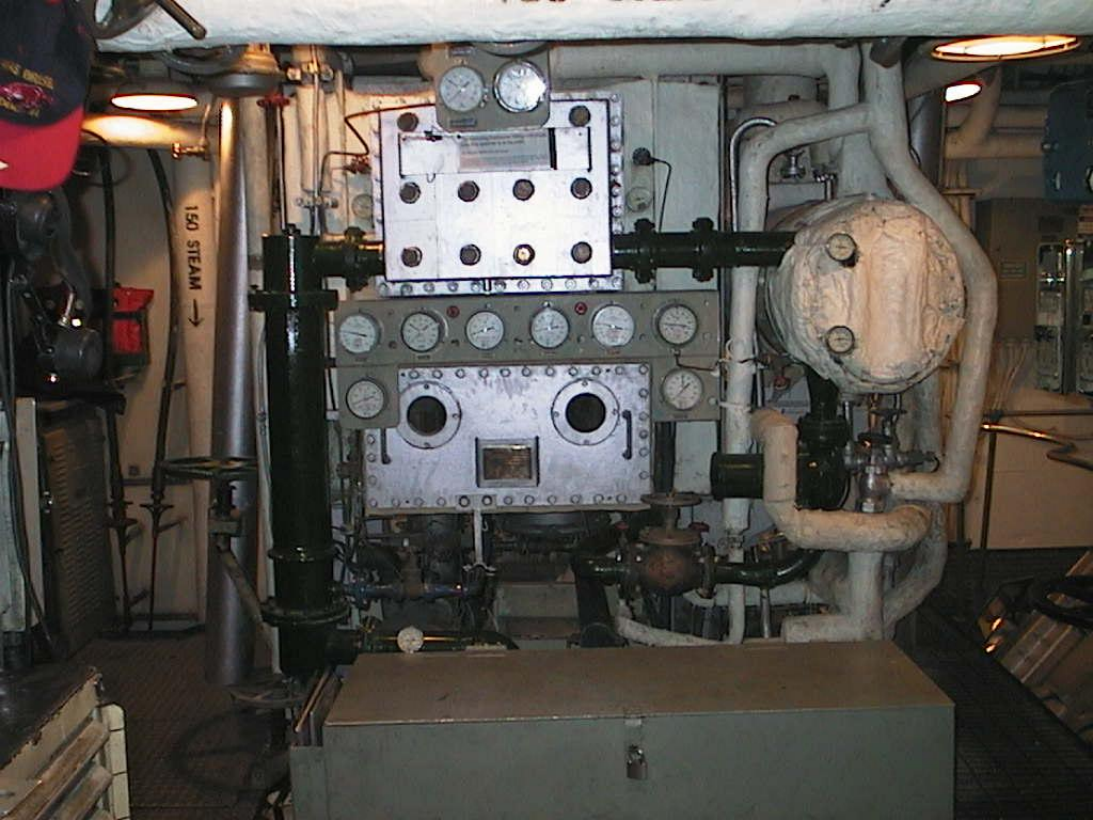
Laid down by Defoe Shipbuilding, Bay City Mich on September 21 1962.

Launched September 26 1963.

Commissioned July 17 1965.

Built for the Australian Navy.

Attached is a photo of the No 2 evaporator of the DDG 41 - HMAS Brisbane.
CPO Mechanician
ex crewmember HMAS Brisbane



150 STEAM →